



**fuse**

The Centre for Translational  
Research in Public Health

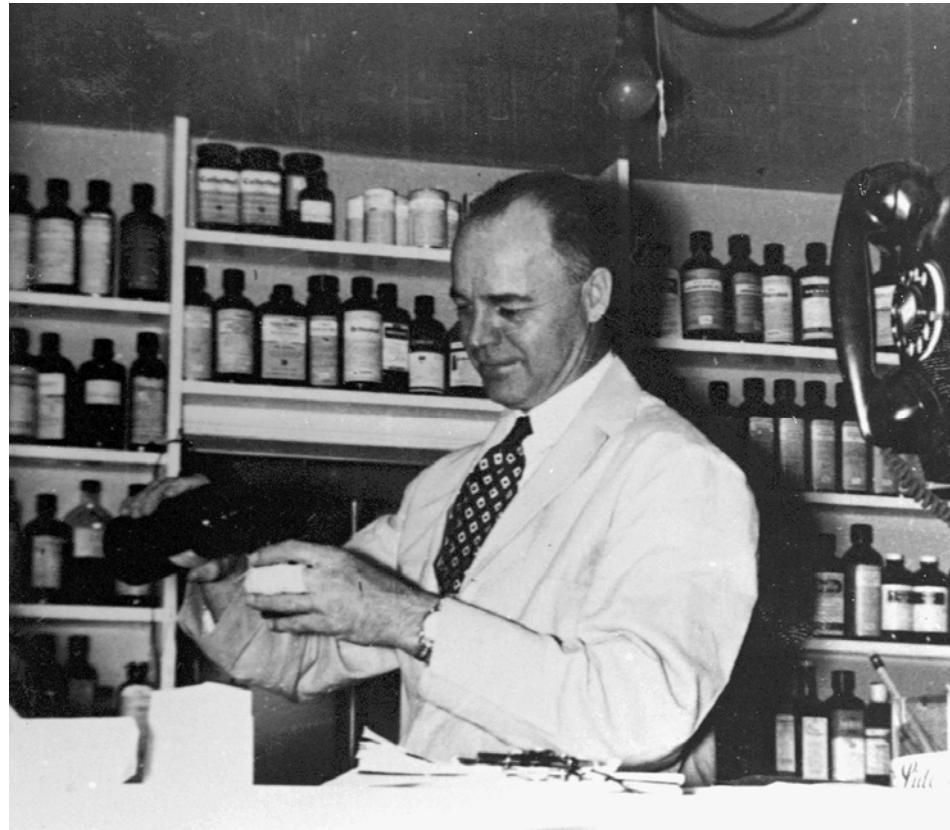
# Welcome

## Community Pharmacy and Public Health: the perfect match?

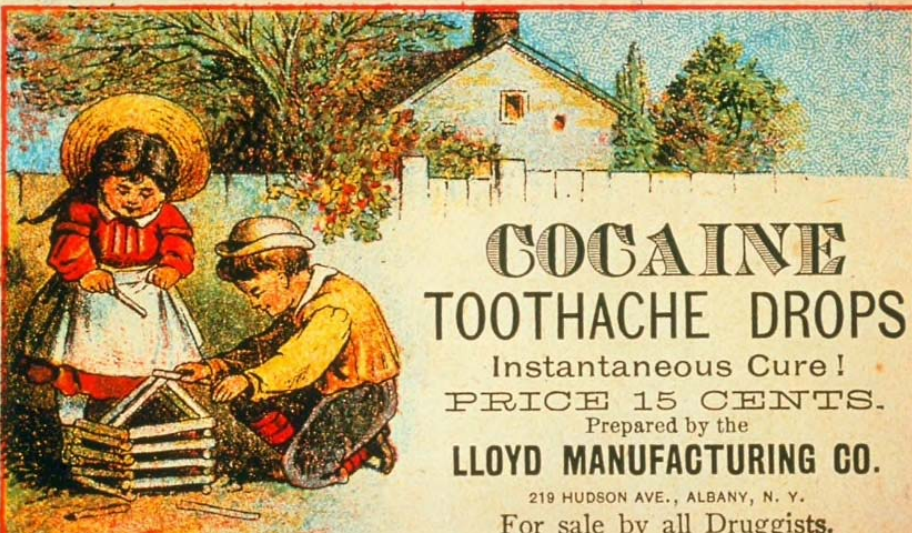
*Tweet during the event using  
the hashtag #FuseQRM @fuse\_online*

[www.fuse.ac.uk](http://www.fuse.ac.uk)


# The traditional Community Pharmacist



# Back in the olden days ...

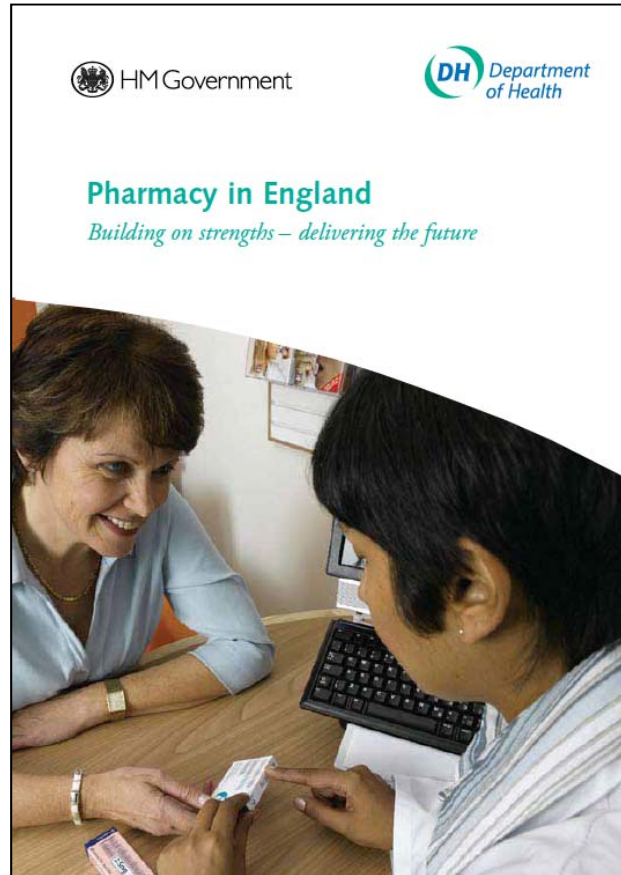


**COCAINE  
TOOTHACHE DROPS**  
Instantaneous Cure!  
PRICE 15 CENTS.  
Prepared by the  
**LLOYD MANUFACTURING CO.**  
219 HUDSON AVE., ALBANY, N. Y.  
For sale by all Druggists.  
(Registered March 1885.) See other side.



**Dr. Batty's**  
*For Your Health*  
**ASTHMA CIGARETTES**  
SINCE 1882  
*For the temporary relief of  
paroxysms of asthma*  
EFFECTIVELY TREATS:  
ASTHMA, HAY FEVER, FOUL BREATH  
ALL DISEASES OF THE THROAT,  
HEAD COLDS, CANKER SOURS  
BRONCHIAL IRRITATIONS  
NOT RECOMMENDED FOR CHILDREN UNDER 6.

# Change in Policy



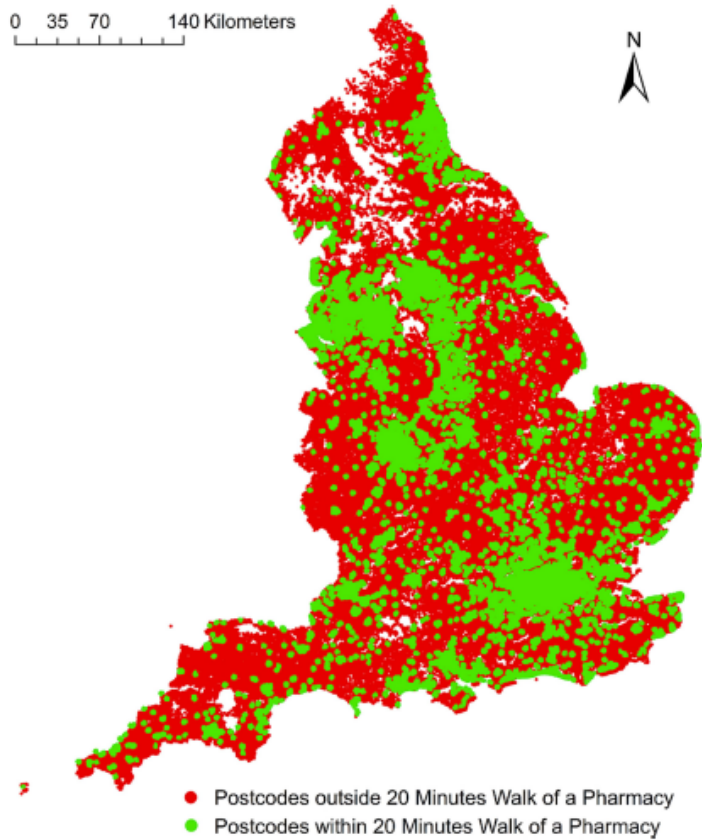
... sets out a vision for building on the strengths of pharmacy, using the sector's capacity and capability to deliver further improvements in pharmaceutical services over the coming years as part of an overall strategy to ensure safe, effective, fairer and more personalised patient care.



# The modern Community Pharmacist



0 35 70 140 Kilometers



## THE INVERSE CARE LAW

---

A “positive pharmacy care law” will ensure access to pharmacies is best in those areas that need it most

---

Source: The Allocation of Medical Resources.




Hart, JT (1971). The inverse care law. *Lancet*. 1(7696): 405-12.

# Untapped potential?

**NewStatesman**

## Our own medicine

Community pharmacies are underutilised and have never been more needed



### The unique accessibility of **COMMUNITY PHARMACIES IN ENGLAND**



**11,500+**  
Community pharmacies in England. These are more accessible than GPs, particularly in deprived areas<sup>1</sup>



**14**  
Number of times, on average, each person uses a pharmacy per year



**1.8m**  
Number of visits per day to community pharmacies for health-related reasons



**89%**  
Proportion of the population living within a 20-minute walking distance of a community pharmacy (100% in most deprived areas)<sup>2</sup>



Events coming soon



## Announcing the next Quarterly Research Meeting



*Communities in Control:  
Changing the social determinants of health*  
Monday 11 January 2018, 9.30am – 1.00pm  
The Core, Newcastle University

Registration available at  
[www.fuse.ac.uk](http://www.fuse.ac.uk)  
[#FuseQRM](https://twitter.com/FuseQRM)